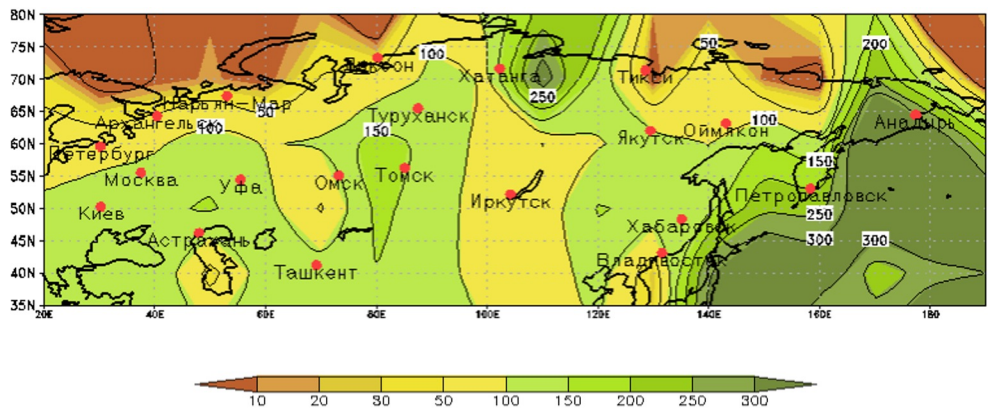


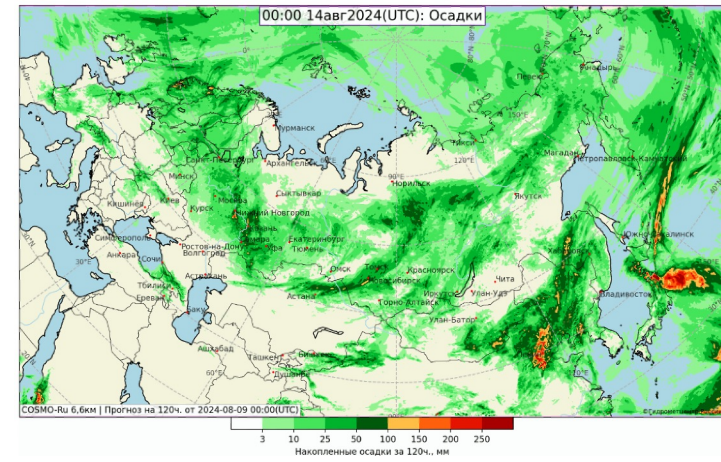
## PRECIPITATION WILL BE BELOW NORMAL

The forecasts (from 09.08.24) show a period with dry conditions for the next week (till 15.08.24) in the south part of European territory of Russia, in Eastern Ukraine and on the Kola Peninsula. The situation will be accompanied by a wildfire class from medium to extreme.

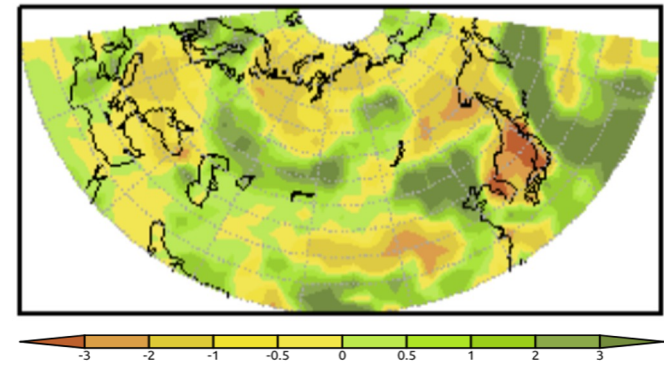
**PRECIPITATION ANOMALIES (% from normal)**  
**02.08-08.08.24**  
Observations (236 stations)



**FORECAST OF ACCUMULATED PRECIPITATION**  
**09.08-14.08.24**  
COSMO-ru model



**THE FORECAST OF PRECIPITATION ANOMALIES**  
**09.08-15.08.24**  
Models SL-AV and MGO



The dangerous phenomena are the phenomena of weather which intensity, duration and time of occurrence represent threat of a security of people, as well as they can cause significant damage to branches of economy. The list of the typical dangerous phenomena which are used and specified by the local territorial hydrometeorological services of Russia Federation is located on the web site of the Hydrometeorological centre of Russia: <http://meteoinfo.ru/hazards-definitions>