



Period: 2026 February, 13 – February, 19



Heat wave: no advisory



Cold wave: no advisory



Below normal precipitation: no advisory



Above normal precipitation:

- Armenia
- Georgia



Significant anomalies:

- positive temperature anomalies in the south of Kazakhstan, Kyrgyzstan, Turkmenistan, Tajikistan and Uzbekistan (up to +6...8 degrees)
- positive precipitation anomalies in the central and southern regions of the Central Federal District and in the west of the Volga Federal District



Period: 2026 February, 13 – February, 19

High impact weather events

Wet conditions are predicted in Armenia and Georgia.

Significant anomalies

Positive temperature anomalies (up to +6...8 degrees) are expected in Central Asian countries.

Positive precipitation anomalies are expected in the central and southern regions of the Central Federal District and in the west of the Volga Federal District.

This is a WMO RCC guidance product to assist NMHSs in generating Climate Watch advisories for their users. When using CWA materials, reference of the NEACC is required.

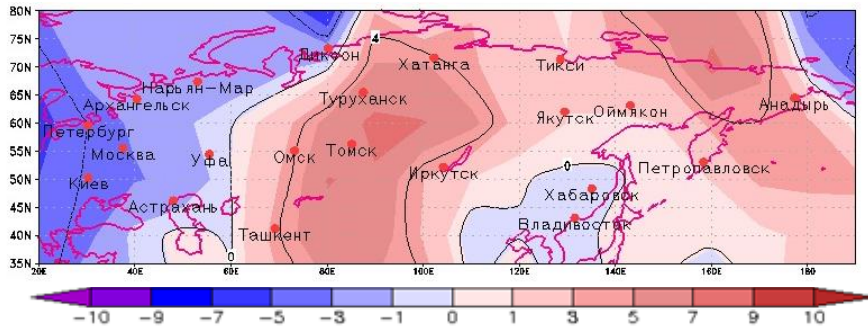
Details on the procedure of the Climate Watch Advisory issuing, as well as the criteria for high impact climate events adopted by the NEACC, are available at <https://seakc.meteoinfo.ru/eng/cwa>
The forecasts are available at <https://seakc.meteoinfo.ru/eng/forecasts>



Monitoring and forecasts data

Temperature anomalies (% of normal)

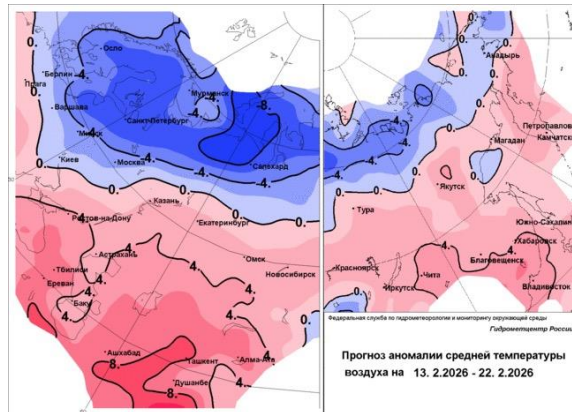
06.02-12.02.26



Average surface temperature anomalies forecast

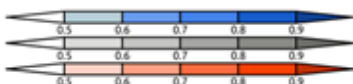
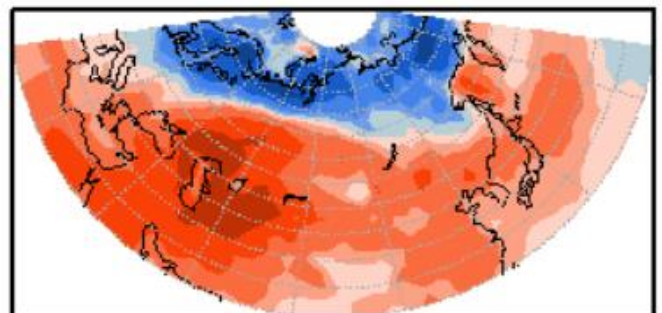
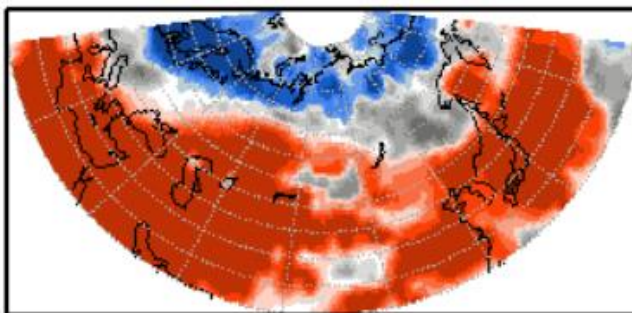
13.02-22.02.26

Source <https://meteoinfo.ru/t-5days>



Probabilistic (left) and deterministic (right) temperature forecast (SL-AV and MGO models)

13.02-19.02.26



Below normal
Near normal
Above normal



This is a WMO RCC guidance product to assist NMHSs in generating Climate Watch advisories for their users. When using CWA materials, reference of the NEACC is required.

Details on the procedure of the Climate Watch Advisory issuing, as well as the criteria for high impact climate events adopted by the NEACC, are available at <https://seakc.meteoinfo.ru/eng/cwa>

The forecasts are available at <https://seakc.meteoinfo.ru/eng/forecasts>



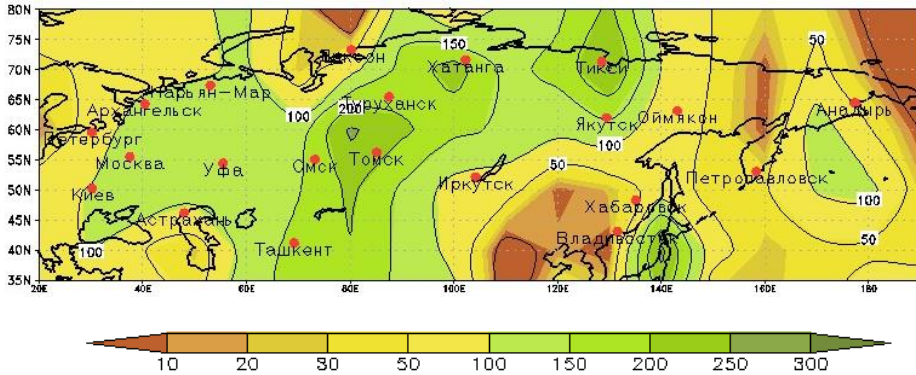
Предупреждение о неблагоприятных климатических явлениях



Monitoring and forecasts data

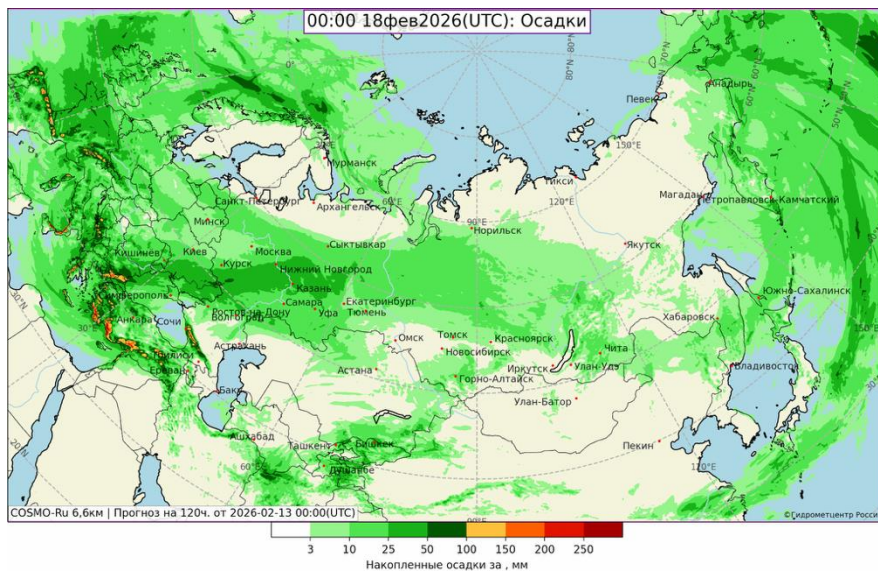
Precipitation anomalies (% of normal)

06.02-12.02.26



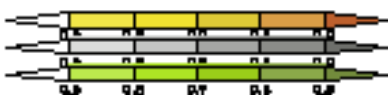
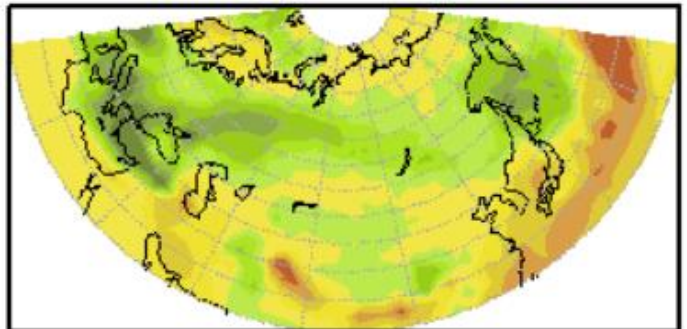
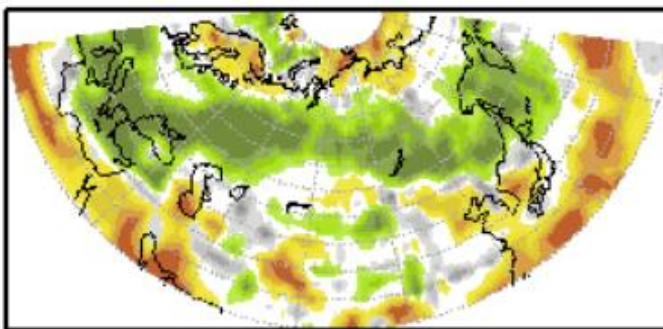
Forecast of accumulated precipitation (COSMO-ru model)

13.02-18.02.26



Probabilistic (left) and deterministic (right) precipitation forecast (SL-AV and MGO models)

13.02-19.02.26



Below normal
Near normal
Above normal

